

IMPERIAL

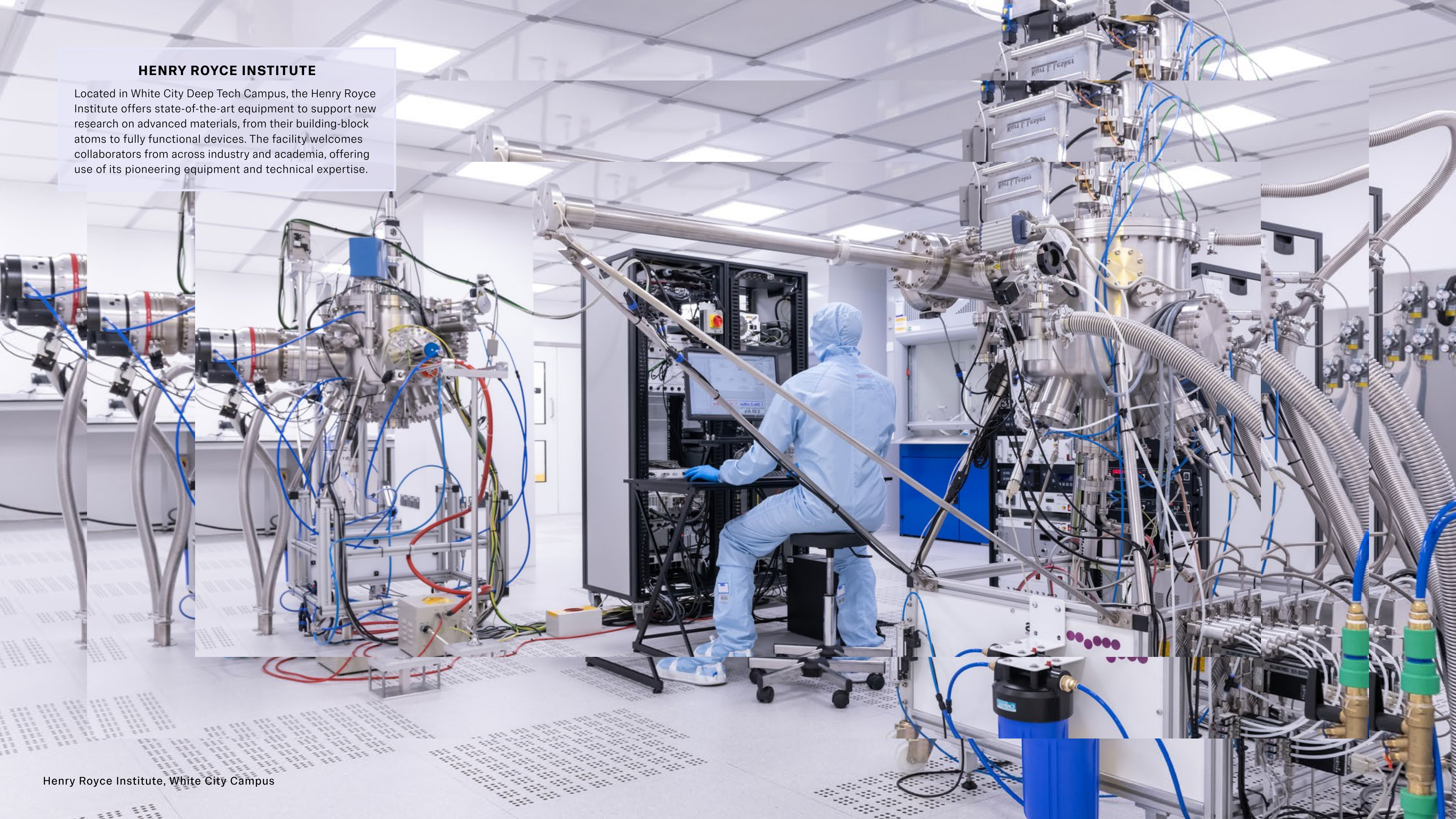


WESTTECH
LONDON



HENRY ROYCE INSTITUTE

Located in White City Deep Tech Campus, the Henry Royce Institute offers state-of-the-art equipment to support new research on advanced materials, from their building-block atoms to fully functional devices. The facility welcomes collaborators from across industry and academia, offering use of its pioneering equipment and technical expertise.



WestTech London.

Built for innovation.



With world-class research institutions, a diverse talent pool, access to investment capital, a rich industrial heritage and major transport links, West London is a thriving, globally competitive innovation ecosystem.

WestTech London will become a global powerhouse for innovation and entrepreneurship, creating jobs, attracting investment and cementing the UK’s position as a leader in science and technology.

Anchored by Imperial’s major science and innovation locations, WestTech London brings together key partners from across West London including the London boroughs of Ealing and Hammersmith & Fulham, as well as

the Royal Borough of Kensington & Chelsea, Westminster, Brent, Harrow, Hounslow, Hillingdon, Old Oak and Park Royal Development Corporation, Imperial College Healthcare NHS Trust and the Greater London Authority.

WestTech London has established, deep connections with Old Oak and Paddington Life Sciences through major regeneration projects with Imperial.

Powering growth in WestTech London

If supported by investment, WestTech London has the potential to grow by an additional +50%

TODAY

BY 2030

1,000



2,500

FRONTIER INNOVATION
BUSINESSES ACROSS
WESTTECH LONDON

FRONTIER INNOVATION
BUSINESSES ACROSS
WESTTECH LONDON

20,000



80,000

PEOPLE EMPLOYED
IN THE FRONTIER
INNOVATION SECTOR

PEOPLE EMPLOYED
IN THE FRONTIER
INNOVATION SECTOR

£9
billion



£41
billion

TURNOVER FROM
THESE ORGANISATIONS
IN 2023

POTENTIAL TURNOVER
FROM THESE
ORGANISATIONS

WestTech London.

Fuelling innovation and driving global impact.

PART OF THE



WESTTECH
LONDON

COMMUNITY

IMPERIAL



WHITE CITY
INNOVATION
DISTRICT



Ealing

OPDC
OLD OAK AND
PARK ROYAL
DEVELOPMENT
CORPORATION

NHS
Imperial College
Healthcare
NHS Trust



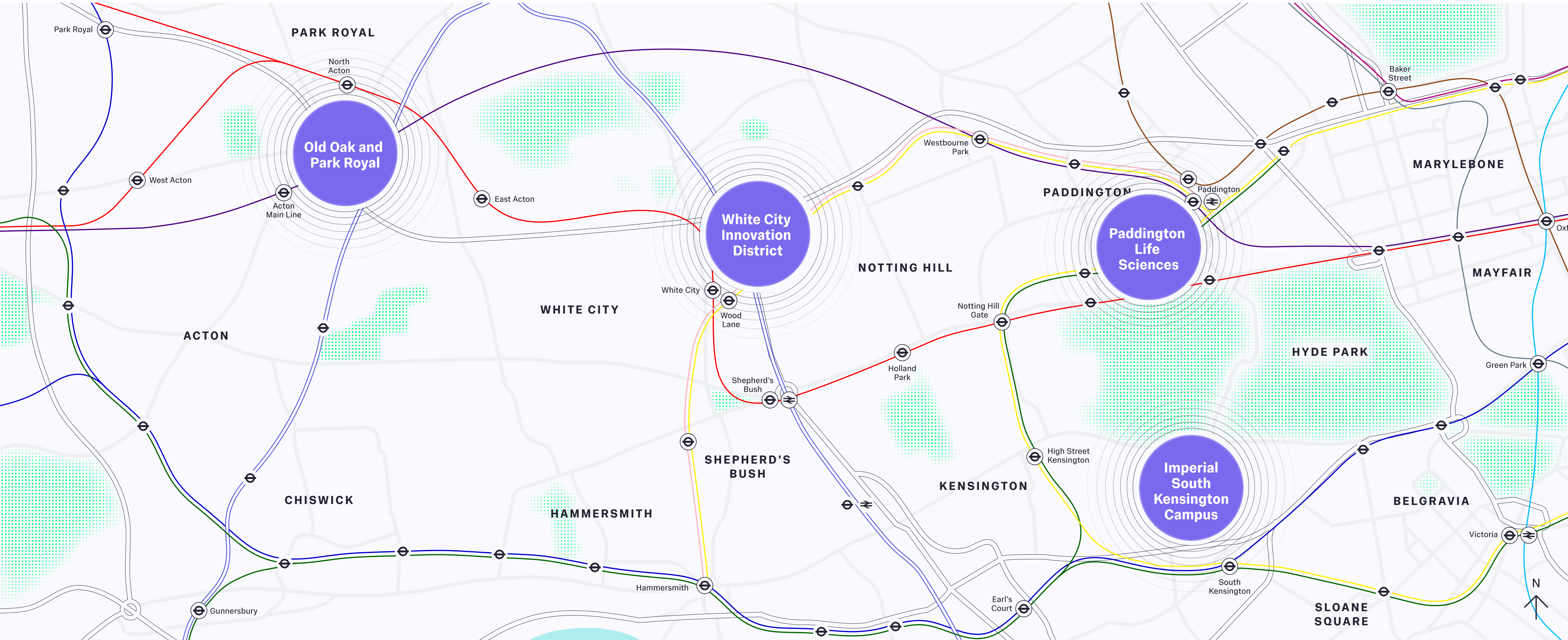
h&f
hammersmith & fulham

PADDINGTON
LIFE SCIENCES



UNIVERSITY OF
WEST LONDON

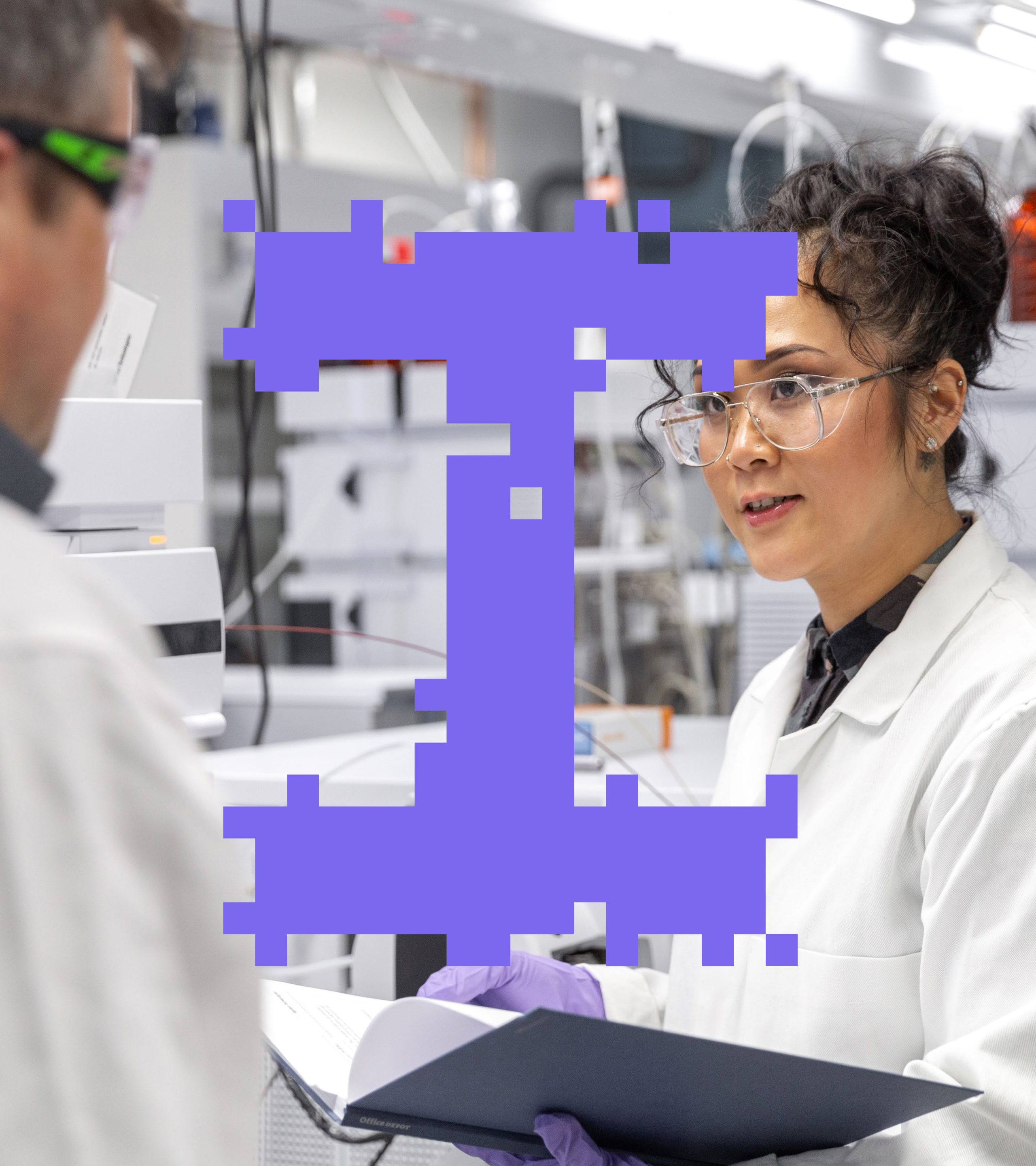
Brunei
University
of London



MULTUS BIOTECHNOLOGY

Multus is a start-up founded by Imperial students aiming to change the cultivated meat industry, bringing forward both climate and animal welfare benefits. Originated in the Advanced Hackspace, the company opened its labs and offices at I-HUB, all within White City Deep Tech Campus.





Imperial.

Where science never stands still.

Imperial is a world-leading university for science, technology, engineering, medicine and business (STEMB), where scientific imagination leads to world-changing impact.

Founded in 1907 with a mission 'To be useful', we use science to try to understand more of the universe and improve the lives of the people in it.

Agility and orientation to the future belie our age and heritage. At Imperial you will find a culture of discovery, innovation and entrepreneurial thinking, where breakthrough science is chased, translated and applied at incredible speed and with transformative impact.

We are unashamedly ambitious in seeking to maximise Imperial's potential as a global force for good – building on our strong disciplinary foundations, deeply collaborative culture, passion for innovation, established convening power, extensive global partnerships, and world-leading reputation.

We work with our partners, investors and donors to accelerate the impact of new discoveries, inventions and ideas, and to shape the future.

Albertopolis.

The world's first innovation district.

With over 150 years of innovation in education, culture and science, Albertopolis is the hub of creativity and discovery, with Imperial at its heart.

Imperial's mission is to achieve enduring excellence in research and education in science, engineering, medicine and business for the benefit of society – and at its South Kensington Campus, Imperial is nurturing the next generation of leaders, developing the people and skills the world needs now and into the future.

The South Kensington Redevelopment

The South Kensington Redevelopment programme is a bold transformation for Imperial which will create world-class physical environments that support discovery, learning and innovation, collaboration and community, and a sustainable, net zero future.



THE GREAT EXHIBITION ROAD FESTIVAL

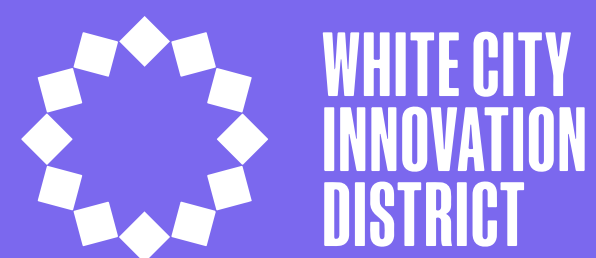
A free annual celebration of science and the arts, which takes place every summer in South Kensington. Visitors can enjoy hands-on workshops, fascinating talks, performances and installations from iconic museums, research and culture organisations, including Imperial, the Natural History Museum, Science Museum, V&A and many more.



The Great Exhibition Road Festival is a free two-day celebration of curiosity, discovery and exploration in South Kensington

White City.

A hub for deep tech.



A PARTNERSHIP BETWEEN
IMPERIAL **h&f**
hammersmith & fulham

White City is emerging as Europe's leading deep tech cluster in AI, cleantech, medtech and security science.

White City Innovation District is home to world-leading researchers and ground-breaking enterprises working on today's greatest challenges and shaping tomorrow's world.

White City Deep Tech Campus

Where Great Ideas Grow

White City Deep Tech Campus is a world-leading centre for innovation, designed to fuel discovery, collaboration and enterprise.

The 23-acre White City Deep Tech Campus has outline consent for 4 million sq ft of space, with more than 2 million sq ft still to be delivered.

The next phase of development will deliver new teaching, research and innovation space for academics and businesses, alongside new homes and student accommodation, retail space with shops, cafés, and restaurants, as well as a new hotel with conference facilities. When complete, more than 25,000 people will live, work and study at White City Deep Tech Campus.



OUR PARTNERS



bruntwood
SciTech

Scale Space, a community created to help innovative companies to accelerate growth, is a joint venture between Imperial and global venture builder **Blenheim Chalcot**. A new 200,000 sq ft state-of-the-art innovation hub is being delivered through a partnership between Imperial and **Bruntwood SciTech**, creating a new home for science and deep tech startups, scaleups and global businesses.

+76%

INCREASE IN DEEP TECH
COMPANIES IN THE WHITE
CITY AREA SINCE 2019

+219%

INCREASE IN DEEP TECH
EMPLOYMENT IN THE WHITE
CITY AREA SINCE 2019

+£337m

RAISED BY WHITE CITY
CAMPUS COMPANIES
SINCE 2023

+£620m

RAISED BY WHITE CITY
INCUBATOR COMPANIES
SINCE 2016

Paddington Life Sciences.

A future of better health.

**PADDINGTON
LIFE SCIENCES**

NHS
Imperial College
Healthcare
NHS Trust

Paddington Life Sciences improves health and reduces inequalities by connecting communities, researchers and industry, centred around St Mary's Hospital, to bring health innovation to life.

St Mary's Redevelopment

St Mary's Hospital has been a leading provider of healthcare, education and research for over 175 years. The new St Mary's will provide the clinical facilities we need to take us into the future as one of the most advanced, research-led, major trauma and acute hospitals in the world. Spanning three million square feet, the redeveloped St Mary's site will create a new kind of healthcare and life sciences complex.



Alongside the hospital will be an additional 1.5 million square feet of cross-functional commercial and lab space for life sciences businesses to start, develop or grow. Co-locating the hospital with more commercial and academic teams, within new specialist life sciences facilities, will enable us to bring new diagnostics and treatments to patients faster as well as give more people the chance to get involved in clinical trials for local, national, and global benefit.

In parallel with the redevelopment of the St Mary's Hospital site, we are helping to bring together industry, academia, the NHS and local communities for the creation of a new life sciences cluster in Paddington, driving improved health, wealth and wellbeing.

“The Fleming Centre will bring together our world-leading research expertise with the legacy and clinical excellence of our partners at Imperial College Healthcare NHS Trust, helping to drive global change and tackle one of the world's biggest challenges head on.”

Professor Hugh Brady
President of Imperial



The Fleming Centre

Part of the wider Fleming Initiative, established jointly by Imperial College Healthcare and Imperial College London to find solutions to antimicrobial resistance (AMR) at a global scale.

It will provide a space to bring together researchers, policymakers, clinicians, behavioural experts, commercial partners and the public to combine their shared networks, expertise and skills in the fight against AMR. It will also be part of a global network of centres in strategic locations around the world that will catalyse worldwide action.

Old Oak. Advancing industrial innovation.

Old Oak and Park Royal – London’s largest regeneration zone and the future home of Old Oak Common Station, the largest new station in the UK (and expected to be one of the busiest) – will play a crucial role in WestTech London.

Imperial own four major sites in Old Oak and Park Royal, with plans to support 4 million sq ft of additional development.

Imperial’s development in the area will provide vital prototyping and advanced manufacturing spaces for cutting edge science and innovation.

Imperial will be seeking development partners to bring forward its plans, with c.£2billion investment opportunities across its sites to deliver new science and innovation uses alongside new purpose-built student accommodation and homes.



AN OPPORTUNITY FOR INVESTMENT

One Portal Way

A new heart for North Acton

Imperial’s plans will see the complete redevelopment of this 4.5-acre site creating a new green heart for Old Oak, including a major new public garden, retail, amenities and services. The development would deliver +1,300 new homes across various tenures, with 35% affordable housing, including student accommodation, alongside 300,000 sq ft of flexible workspace.

Victoria Industrial Estate

A thriving community of industrial, science and tech

Imperial’s 10-acre Victoria Industrial Estate presents a unique opportunity in the ecosystem. It offers flexible innovation spaces for prototyping, pilot manufacturing and GMP for firms looking to translate great ideas into great products. It will be redeveloped in the future for industrial innovation uses and accommodation.

OLD OAK COMMON

A MAJOR NEW
TRANSPORT INTERCHANGE
Connects HS2, Great Western Rail, Elizabeth line,
London Heathrow Express

65,000

NEW JOBS – POSITIONING
PARK ROYAL AS LONDON’S
PREMIER INDUSTRIAL
LOCATION

25,000

NEW HOMES – CREATING
A VIBRANT, LIVE-WORK
COMMUNITY

PARK ROYAL

EMPLOYMENT ZONE –
THE LARGEST INDUSTRIAL
AREA IN LONDON

IMPERIAL AERO

Imperial's Department of Aeronautics has a comprehensive range of state-of-the-art wind tunnels, covering every conceivable area in experimental aerodynamics. Speeds range from a few metres per second to Mach 9. There are three closed-circuit low-speed tunnels, two high-speed tunnels, a water tunnel and a selection of smaller blow-down wind tunnels.

A research team in Aeronautics utilising the wind tunnel at Imperial's South Kensington Campus

Imperial endowment.

Making donor gifts go further.

The Imperial Endowment is the university's investment fund: a source of capital that can be used to advance Imperial's mission and to safeguard the university's future for generations to come.

With an endowed gift, you create a long-term source of support for the priorities that matter to you most. Careful management of your gift ensures that it continues to support research and education that benefits humanity not just for the present, but in perpetuity.

The Endowment was established in its current form in August 2007, with founding capital of £69.3 million. Since its inception, the Endowment has grown to more than £595m through generous donations and the effective stewardship of the university's investment assets.

FUELLING AIR POLLUTION RESEARCH

An endowed gift from Humphrey Battcock established the Battcock Chair in Community Health and Policy, enabling Imperial to appoint Professor Frank Kelly, one of the world's leading air pollution researchers, as its inaugural holder. Thanks to this endowed donation, the post exists in perpetuity, ensuring a sustained focus on air pollution research. With research spanning from environmental research to science policies, Professor Kelly's group is leading on air quality research and delivering solutions to minimise the effects of pollution on public health, including shaping London's pathbreaking congestion charge schemes, contributing to lower emissions estimated at 30%.



The Environmental Research Group is led by Professor Frank Kelly Battcock Chair in Community Health and Policy, and based in the Sir Michael Uren Hub



**For more information - and to discuss
partnering, investing and developing within
WestTech London - please contact:**

Alice Sewell, Investment Director

a.sewell@imperial.ac.uk

Katherine Fieldgate, Investment Director

k.fieldgate@imperial.ac.uk